

DO NOT OPEN THIS BOOKLET UNTIL YOU ARE ASKED TO DO SO



ENTRANCE EXAMINATION - VIIITH
DEFENCE CAREER ACADEMY,
AURANGABAD.

As an ISO 9001 : 2008 - Certified

ENT : 2014

SR. NO.

TIME ALLOWED : 1.30 HOURS

TOTAL MARKS : 100

QUESTION - BOOKLET

GENERAL INSTRUCTIONS

* *Read instructions given below carefully for solving this question paper.*

1. This question paper has 90 questions. Each question carries 1 mark.
2. **Last** two descriptive questions are **compulsory**. They carry 5 marks each.
3. There is a separate answer-sheet to write the answers. Each question has four options. Options are ABCD out of the four any one of the options is the correct answer. Shade the correct answer in the answer-sheet.

Example : If the correct answer for Q. NO 6. is **B**, then record your answer as follows:

Question No. 6 A B C D

4. Answer recorded in any other form will not be considered. Such answers will be marked 'zero'.

Example : A B C D

5. Answer should be written using a pencil only. Blue or black ball pen or ink-pen will not be accessed.
6. Answers once marked cannot be changed or rewritten.
7. Any kind of cancellation or answers recorded marked in more than one circle will not be considered.
8. The exam has limited time, in case you are not able to solve a question, kindly solve the next question. If time permits you can try to solve the unsolved questions.
9. Essay must be written at the back portion of the Answer paper.
10. Result of this examination will be displayed on the Notice Board.
11. Do not write or mark anything on the question paper.

DO NOT OPEN THIS BOOKLET UNTIL YOU ARE ASKED TO DO SO

Q.1. to 4 : Read the following passage carefully and answer the questions choosing the correct option.

It was the ambition of an eleven-year old boy in Kansas City to be an engine driver. Born without arms, Tom had been to special schools where he learned to use his feet as 'hands' He spent all his spare time watching trains and one day his dreams came true.

In the railway yard close to his home, Tom saw a deserted engine, He didn't need any invitation to climb in. Starting the engine with his feet was as easy as apple pie. Soon he was travelling along at forty miles an hour. Signalmen could not see the young driver, so that set out to stop the train. Meanwhile the boy reached Missouri, stopped the engine himself, and then made it go backwards. When he was near home, a railway-man caught up with the engine and stopped it. At first he was very angry, but he smiled when the boy said simply, "I like trains." "Well, I'm glad you don't like planes !" answered the railway man.

1. How old was the boy?
a) eleven years b) nine years c) twelve years d) eight years
2. What did the boy like?
a) train b) bus c) plane d) bike
3. He was very angry. The exclamatory sentence would be ...
a) he was too angry b) He was too angry !
c) How angry he was d) How angry he was !
4. What was the speed of the boy in this passage.
a) 40 miles/hr b) 39 miles/hr c) 38 miles/hr d) 41 miles/hr

Q.5. to 7 : Read the following poem carefully and answer the questions choosing the correct option.

"You are old, Father William," the young man cried,
And pleasures with youth pass away.
And yet you lament not the days that are gone;
Now tell me the reason, I pray."
"In the days of my youth," Father William replied,
"I remember'd that youth could not last;
I thought of the future, whatever I did
That I never might grieve for the past."

5. What about he was thinking ?
a) past b) future c) youth d) pleasures
6. Select similar word for lament.
a) repent b) complain c) torture d) cry
7. The rhyme word for pray.
a) last b) did c) cried d) away

Instruction : Fill in the blanks with suitable alternative.

8. You must Control Your love.
a) Common Noun b) abstract Noun c) Proper Noun d) Collection Noun
9. I under took a passionate Search
a) Verb b) adjective c) adverb d) noun
10. They decided to visit poltry farm.
a) noun b) adjective c) adverb d) pronoun

11. You will choke If you eat fast.
 a) adverb b) verb c) adjective d) noun
12. Soni is not bad driving.
 a) for b) at c) to d) with
13. Vikas looked his mother as goddess.
 a) after b) upon c) about d) at
14. Amolnow.
 a) was working b) working c) is working d) worked
15. Please there.
 a) go b) went c) is going d) gone

Instruction : Find the word with correct spellings.

16. a) included b) encluded c) inculed d) none of these
17. a) entrance b) intrance c) entrence d) intrence

Instruction : Give the Synonyms of :

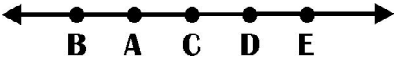
18. As I look around I see the crumbling ruins of a proud civilization strewn like a vast heap of **FUTILITY**.
 a) Irrelevance b) Absurdity c) Pointlessness d) Downtrodden
19. Mark Antony's **EULOGY** of Caesar is finely recorded by Shakespeare in his play.
 a) Prayer b) Honour c) Praise d) Denunciation
20. By 1918, Gandhiji had established himself as a leader with a **UNIQUE** way of protesting exploitation and injustice.
 a) Different b) Exceptional c) Excellent d) Good
21. Your **INTERVENE** was required.
 a) Interference b) Interruption c) Disturbance d) Connection

Instruction : Give the Antonyms of :

22. Previously per capita income used to **INCREASE** by seven rupees per year.
 a) Dwindle b) Diminish c) Mitigate d) Profit
23. In the modern times, we find that most social relationships are rather **ARTIFICIAL**.
 a) Decent b) Genuine c) Excellent d) Adorable
24. Social **LIBERTY** may be instrumental in the emotional growth of a person.
 a) Constraint b) Slavery c) Compulsion d) Obligation
25. Education is most **ESSENTIAL** for the all-round development of a person.
 a) unimportant b) Disdainful c) Customary d) Redundant

Instruction : Find the error in one of the part of the sentence.

26. Hari was hurt badly ,isn't he?
 a b c d
27. Ramchandra loves we all.
 a b c d
28. Viju is Clevers than any boy in the class.
 a b c d
29. The mobile are on the table.
 a b c d
30. What was you understand ?
 a b c d

31. $9(8-3 \times 4) = ?$
 a) 180 b) -18 c) -180 d) 235
32. A number is divisible by 5 as well as by 3 Hence, the number is definitely divisible by
 a) 6 b) 15 c) 9 d) 21
33. The number 794×84 is divisible by 12 what will be the greatest appropriate number at the place of*?
 a) 9 b) 4 c) 8 d) 7
34. $\frac{1}{2} \div \frac{1}{2} + \frac{1}{2} \times \frac{1}{2} - \frac{1}{2} = ?$
 a) 9 b) 0 c) $-\frac{1}{2}$ d) $\frac{3}{4}$.
35. $\frac{9}{17} = ?$
 a) 0.9 b) 9.17 c) 0.64 d) 0.52
36. $8.04 \times 0.07 = ?$
 a) 0.228 b) 0.508 c) 0.5628 d) 0.056
37. What is the square of 9
 a) 49 b) 81 c) 64 d) 18
38. Which number, from the numbers 6745, 3147, 8428 and 4624 is a perfect square ?
 a) 3147 b) 6745 c) 4624 d) 8428
39. If $0.0000000027 = 27 \times 10^x$, then $x = ?$
 a) -9 b) -8 c) -10 d) -12
40. If $16 = 4^x$ then $x = ?$
 a) $\frac{4}{3}$ b) $\frac{3}{4}$ c) 2 d) 1
41. What is $7\frac{3}{4}$ percent?
 a) 775 b) 7.75 c) 0.00 775 d) 0.0775
42. Makarand purchased a school bag labelled Rs. 365. The shopkeeper gave him a discount of 4% Then now money did makarand pay to shop keeper?
 a) Rs. 376.60 b) Rs. 361 c) Rs. 350.40 d) None of these
43. Find the number of segments in the adjoining figure

 a) 5 b) 7 c) 10 d) 9
44. All radii of the same circle are
 a) unequal b) equal c) both (a) & (b) d) can't say
45. The angle inscribed in a semi circle is
 a) 180° b) 108° c) 360° d) 270°
46. The side of a square is 6cm \therefore Area of the square =
 a) 12 cm^2 b) 36 cm^2 c) 24 cm^2 d) 36 cm^2

47. The longest chord of a circle is the of the circle.
 a) chord b) radius c) diameter d) none of above
48. If complementary angle = 67° , then supplementary angle = ?
 a) 23° b) 113° c) 157° d) 136°
49. Total surface area of a cube =
 a) $6(\text{side})^2$ b) $2(\text{side})$ c) $4(\text{side})$ d) $(\text{side})^2$
50. What is the radius of circle which touches all sides of a square. If the area of square is 121sq cm .
 a) 5 cm b) 11 m c) 11 cm d) 8m
51. If the diagonal of rectangle ABCD is 11 units & Its breadth is 6 units, find the area of ABCD
 a) 60 sq. units b) 30 sq. units c) 36 sq. units d) 66 sq. units
52. Find the area of square whose side is 6 m.
 a) 12cm^2 b) 36m^2 c) 24cm^2 d) None of these
53. Perimeter of a square
 a) $2 \times \text{side}$ b) $2 \times \text{length} + 2 \times \text{breadth}$
 c) $\text{side} \times \text{side}$ d) $4 \times \text{side}$
54. Area of square =
 a) $\text{side} \times \text{side}$ b) $2 \times \text{side}$ c) $3 \times \text{side}$ d) $\text{side} \times 4$
55. The volume of a cubical block is 343 cu cm . what is total surface of the block?
 a) 196 sq. cm b) 294 sq. cm c) 588 sq. cm d) 147 sq. cm .
56. Sum of 2 angles is 180° called
 a) Complementary b) Supplementary c) both (a) & (b) d) linear pair
57. What is the sum of the odd prime numbers from 1 to 20 ?
 a) 87 b) 57 c) 77 d) 75
58. What is the sum of the numbers from 11 to 20?
 a) 55 b) 155 c) 80 d) 210
59. The numbers unit place have 0,2,4,6,8 then the number is divisible by.....?
 a) 4 b) 11 c) 3 d) 2
60. What is the difference between the largest and smallest four digit numbers formed from digits 7,0, 1 using 0 more than once ?
 a) 6930 b) 6039. c) 6093. d) 6309
61. In the given sequence of numbers, how many times does 5 occur immediately after 1 and before 3 ?
 5 3 2 4 6 1 5 3 2 5 4 3 5 6 1 5 3 4 7 4 3 5 1
 a) 2 b) 3 c) 4 d) 1
- Direction : R A C D F B O R F B R D O O R B F M B O**
62. How many times does the letter B follow F in the given sequence?
 a) Four b) Three c) Two d) One

Direction : find the words that belong to the following groups:

63. cat, dog, cow,

- a) tiger b) buffalo c) lion d) wolf

64. dollar, yen, pound,

- a) rupee b) paise c) coin d) france

65. In each of the following, three of the figures and one of them does not belong to a group . Find the term:



Direction :Find out the number which will occur at the place of question mark, in each series given below:

66. 17 55 39 68 ?

- a) 97 b) 87 c) 106 d) 78

67. 3 10 31 94 ?

- a) 7 b) 32 c) 283 d) 95

Direction : In the following questions, the 1st words is related to the 2nd word, So also the 3rd to the 4th. Select the proper word from the given alternatives in the place of question mark?

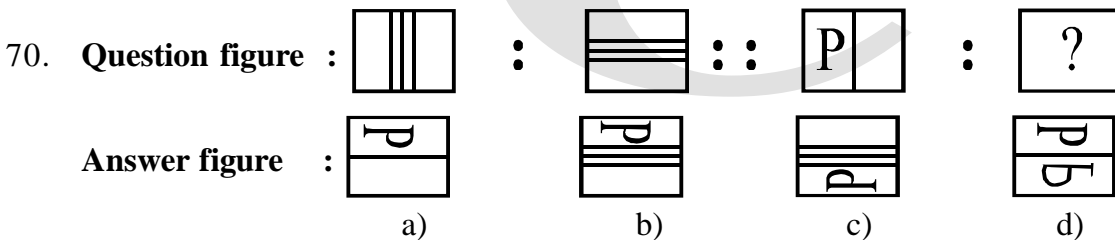
68. socks : shoes :: cup : ?

- a) dish b) plate c) saucer d) platter

69. ankle : anklet :: wrist : ?

- a) necklace b) bangle c) ring d) elbow

Direction : In each of the question given below, there is a certain relationship between the first and second figures. The same relationship exists between the third and fourth figures. Find the relation and choose the correct answer to replace the question mark :

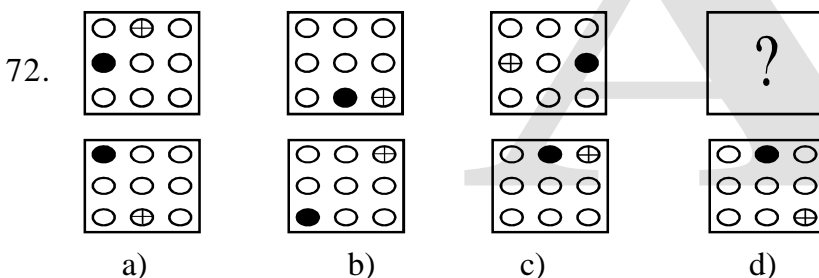


Direction : In the following question find the correct alternative to replace the question mark :

71. 17, 25, 32, 37, 47, ?

- a) 50 b) 60 c) 58 d) 70

Direction : In the following questions find the correct alternative to replace the question mark:



Direction : What will come in place of the question mark in the following series ?

73. $\Omega \& \Omega \oplus, \Omega \Omega \& \oplus, ?, \Omega \Omega \& \oplus$

- a) $\Omega \Omega \& \oplus$ b) $\Omega \& \Omega \oplus$ c) $\Omega + \Omega \oplus$ d) $\Omega \Omega + \oplus$

Direction : Identify the wrong term in the series :

74. M, M, O, I, Q, H.

- a) H b) I c) K d) M

Direction : In the following question, in each term, on the left side a number is given and on the right side the number in the code is given. In each question, different rule is applied. Find out the rules and solve the questions.

75. In a code, $1 = 2, 2 = 3, 3 = 4$. What is the original value of the expression which is written as $3 + 4 \times 3$ in the code ?

- a) 9 b) 8 c) 7 d) 6

76. In a code, $1 = 3, 3 = 5$ and $5 = 7$. What is the value of $3 \times 5 + 1$ in this code?

- a) 38 b) 16 c) 50 d) 18

Direction : In the following series, which letters should replace the blank space or question mark ?

77. ab ? aa?b? aa?a

- a) abba b) abab c) baba d) baab

78. a - aaabaaa - aaa - aa

- a) aba b) bbb c) bba d) aab

Direction : Which symbol should occur in the places of question mark below ?

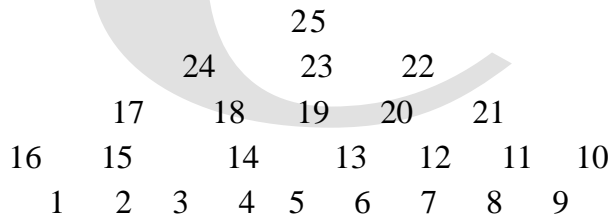
79. $\oplus + ? \oplus \oplus ? + \oplus ? ++ \oplus$

- a) $\oplus \oplus +$ b) $++ \oplus$ c) $\oplus + \oplus$ d) $+ \oplus +$

80. $\Delta \Delta ? \bigcirc \bigcirc \Delta ? \Delta \bigcirc ? \Delta \Delta \Delta \bigcirc \bigcirc$

- a) $\Delta \bigcirc \bigcirc$ b) $\bigcirc \bigcirc \bigcirc$ c) $\Delta \Delta \bigcirc$ d) $\Delta \Delta \Delta$

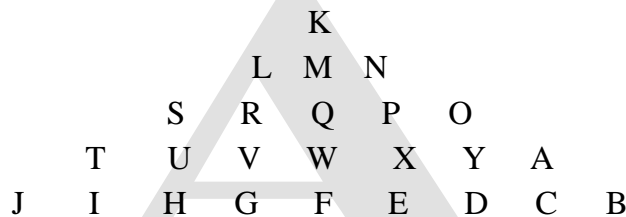
Direction : Study the pyramid given below and answer questions upon it:



81. $14, 15, 16 : 3 :: 11, 12, 13 : ?$

- a) 5 b) 6 c) 7 d) 8


Direction : Study the pyramid given below and answer questions upon it:







82. SLR : ONP :: UR V : ?

- a) YPX b) PXY c) YXP d) POY


Direction : Find out the water reflection of a question figure from the given answer figures :





83. **Question figure :** 

Answer figure :    

a) b) c) d)

Direction : Find the mirror image for the following question figure from the answer figures :

84. **Question figure :** 

Answer figure :    

a) b) c) d)

Direction : In this type of question, ages of two or more persons are compared in terms of multiples or differences one has to find out one of the person's age.

85. Savita is elder by 15 years than Sangeeta. 6 years later, the sum of their ages will be 33 years. What is Savita's age today?

a) 24 years b) 25 years c) 18 years d) 23 years

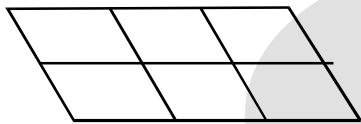
86. Sunanda's age is greater by 8 years than the sum of ages of her two sons. The difference between ages of her sons is 3 years. If Sunanda's age is 45 years, what will be the age of her elder son?

a) 22 years b) 21 years c) 20 years d) 17 years

Direction : Study carefully figure given below and write the answer in the box

87. How many parallelograms are there in the figure?

a) 14
b) 15
c) 16
d) 18



88. Karina is standing in a queue. Nine girls are standing behind her and eleven girls are standing in front of her. What would be the position of the girl from the front who is standing in the third position from behind ?

a) 18 b) 17 c) 14 d) 19

89. Amol is facing the pole star. If he turns to his left through 90° , which direction will be at his back side?

a) West b) East c) North d) South

90. Jai is facing the rising sun. He walked 4 metres straight ahead and then turned left at a right angle. After having walked 3 metres he turned left again and walked 2 metres. In which direction is he standing now from the starting point?

a) North b) Northeast c) Southeast d) West

* **Descriptive question (compulsory)**

I) **Write an essay on any one of the following.** 5M

a) Tree is life b) My Best friend c) The Dowry System

II) **Expansion of an idea-** 5M

As you sow, so shall you reap.
